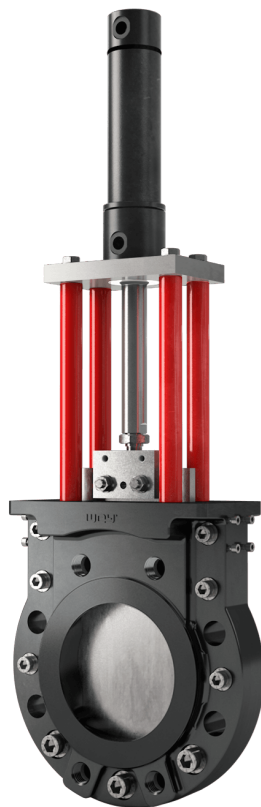




MH SERIES

The MH series is designed for extremely high pressures in particularly demanding applications. The original Wey design ensures optimal sealing in the seat and is 100% bubble-tight, regardless of pressure, medium, or on/off cycle.



CHARACTERISTICS MH SERIES

100 – 400 mm

Nominal sizes

**Stainless steel, Ductile iron,
Special material**

Material

0 – 25 bar

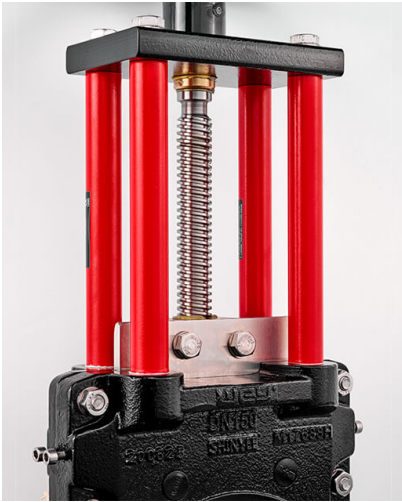
Pressure rating

**PN25, ANSI Class 150,
ANSI Class 300**

Flange drilling

EN 558 series 16

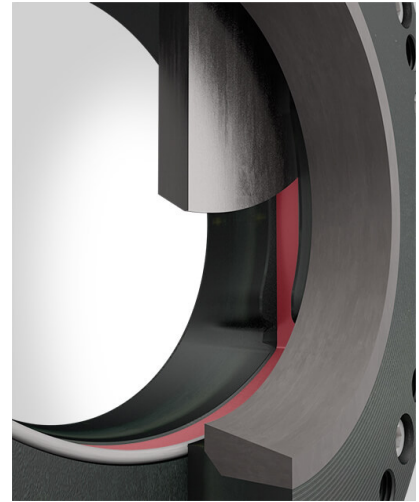
Face to face dimension



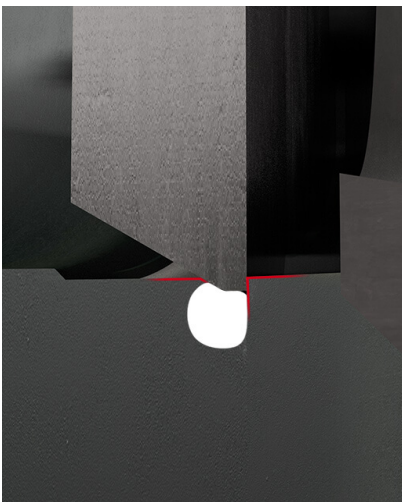
Robust 4-post topwork for maximum load and a wide variety of actuator types.



The heavy-duty transverse seal is fitted with pressure-assisted scrapers, which clean the gate, protect the seal profile and thus ensure a longer service life.



The gate is mechanically guided over the full stroke.



In the closed end position, the gate is also mechanically supported.

APPLICATION AREAS

Mining

e.g. Mining slurry, Sinter water, Tailings, , Acids and phosphates ...

Chemical and petrochemical industries

e.g. Viscous pastes, Bitumen/tar ...

Infrastructure

e.g. Waste water ...

Coal fired power stations

e.g. Coal slurry ...

Pulp and paper industry

e.g. Pulp Stock (Low to high density), Liquor (black, white, green), Chemical solutions, bleaching agents ...

Waste water treatment plants

e.g. Raw water, Sludge, Digested sludge ...

MATERIAL OF CONSTRUCTION

Part	Cast iron	Stainless steel
Body	EN-GJS-400-15	1.4408
Gate	1.4301	1.4404*
Seal	NBR	NBR
Topwork	Carbon steel	Carbon steel
Stem / Piston rod	1.4104	1.4104

Other materials upon request

*hard chromed

CORROSION PROTECTION

Body	2 Comp. Epoxy-Polyamide Resin Primer, 2 Comp. Polyurethane-Enamel-Top Coat
Topwork	2 Comp. Epoxy-Polyamide Resin Primer, 2 Comp. Polyurethane-Enamel-Top Coat

ACTUATORS



Handwheel



Bevel gear



Pneumatic cylinder





Hydraulic cylinder




Electric actuator

**CONTACT US FOR
YOUR TAILOR-MADE
SOLUTION.**

 Contact

 +41 41 449 99 44

 rfq@weyvalve.ch