



# DP SERIES

With its special O-Port gate design, the DP model is suitable for the most difficult applications involving solids. Due to its unique design, it can easily cut through a medium column holding solids. The integrated transverse seal sets the DP model apart from conventional O-Port gate valves, guaranteeing maximum performance and zero leakage.



## CHARACTERISTICS DP SERIES

---

**50 – 400 mm**

Nominal sizes

---

**Stainless steel, Cast iron, Ductile iron, Cast steel, Special material**

Material

---

**0 – 25 bar**

Pressure rating

---

**PN10, PN16, PN25, ANSI Class 150**

Flange drilling

---

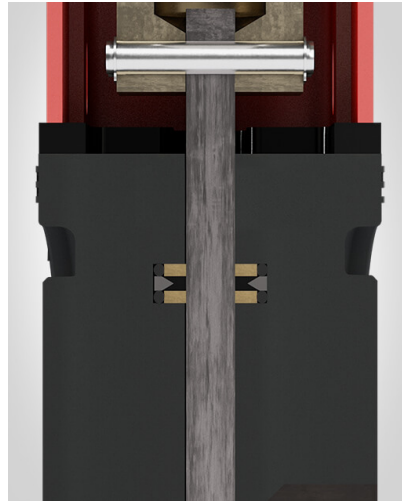
**EN 558 series 20, Special length**

Face to face dimension

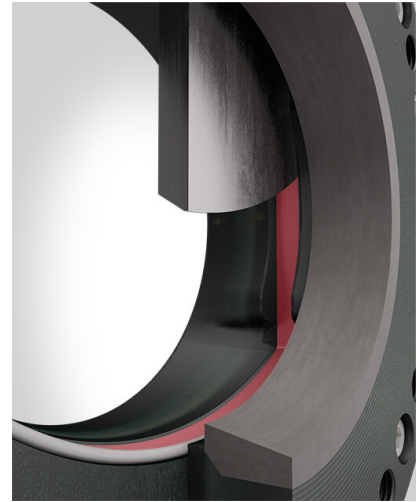
---



The through gate design allows valve to be closed through stagnant media columns or if there are long-fiber media.



A unique transverse seal, consisting of a transverse seal profile and packing compound, makes the body bubble-tight towards the atmosphere.



The gate is mechanically guided over the full stroke.

## APPLICATION AREAS

### **Biogas plants**

e.g. Wood chips ...

### **Chemical and petrochemical industries**

e.g. Granulates ...



Wey DP made of hardened steel in our production site in Switzerland.

## MATERIAL OF CONSTRUCTION

Part	Cast iron	Stainless steel
Body	EN-GJL-250	1.4404
Gate	1.4301	1.4404*
Seal	NBR / Brass	NBR / Brass
Topwork	Carbon steel	Carbon steel
Stem / Piston rod	1.4101	1.4104

Other materials upon request

\*hard chromed

## CORROSION PROTECTION

Body	2 Comp. Epoxy-Polyamide Resin Primer, 2 Comp. Polyurethane-Enamel-Top Coat
Topwork	2 Comp. Epoxy-Polyamide Resin Primer, 2 Comp. Polyurethane-Enamel-Top Coat

## ACTUATORS



**Handwheel**

---



**Bevel gear**

---



**Pneumatic cylinder**

---



**Hydraulic cylinder**

---





**Electric actuator**

---

**CONTACT US FOR  
YOUR TAILOR-MADE  
SOLUTION.**

 Contact

 +41 41 449 99 44

 [rfq@weyvalve.ch](mailto:rfq@weyvalve.ch)